

Proximity to Key Services



Cubework Locations

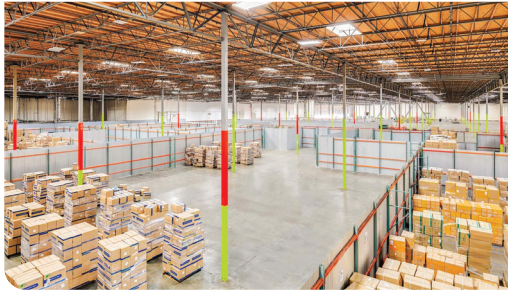
Operating nationwide, spanning across multiple states:

- | | | |
|---------------|----------------|---------------------|
| Texas | New Jersey | Los Angeles County |
| Washington | New York | Orange County |
| Virginia | Pennsylvania | Inland Empire |
| Oklahoma | South Carolina | Northern California |
| Florida | Tennessee | Arizona |
| Georgia | Utah | Colorado |
| Illinois | Missouri | |
| Indiana | Nevada | Global |
| Massachusetts | Oregon | Asia - Pacific |

CUBEWORK

Austin Facility Map





📍 8119 Exchange Dr., Austin, TX 78754
 📞 800-338-6369

Building Highlights

Cubework is the nation's premier short-or-long term warehouse provider, we specialize in offering expensive commercial storage, office solutions, and commercial parking without the need for long-term leases. Expand and downsize and never pay for more than what you need.

24/7 Building Access

On-site Staff

Turnkey Spaces

Conference Rooms

Daily Janitor Service

High-speed Internet

CCTV, Surveillance System

Ample Loading Docks

Gourmet Coffee & Water

Forklift Rentals and Labor

Property Features

RBA	112,000 Square Feet
Site	13.43 Acres
Clear Height	24'
Loading Docks	12 ext
HVAC	Yes
Fire Protection	Yes
Access	24/7, Turnkey
Warehouse	300 - 108,805 SF Divisible
Private Office	300 - 3,195 SF Divisible

